

LCC Modelling System

B 70-05 water tower

All drawings are not in scale.

LCC Modelling System is flexible and you can make easy modification. Please visit our website at www.lcut.co.uk to shop for additional LCC elements.

Length: 164mm

Width: 85mm

Height: 148mm

Bundle contains:

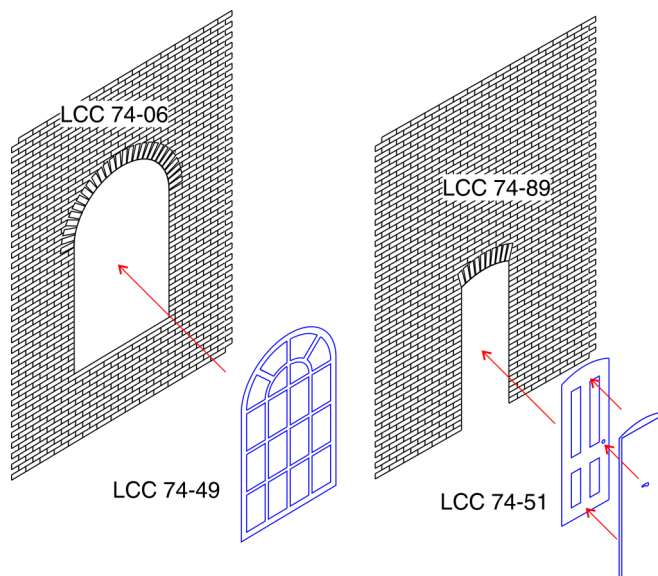
- 2x LCC 70-00
- 1x LCC 70-01
- 2x LCC 74-06
- 2x LCC 74-12
- 2x LCC 74-12c
- 1x LCC 74-18
- 1x LCC 74-21
- 2x LCC 74-49
- 1x LCC 74-51
- 1x LCC 74-89
- 2x LCC 74-90
- 4x LCC 74-91
- 2x LCC 74-92

We recommend PVA or any other paper/wood glue for the fibre board parts.

Painting recommendation:

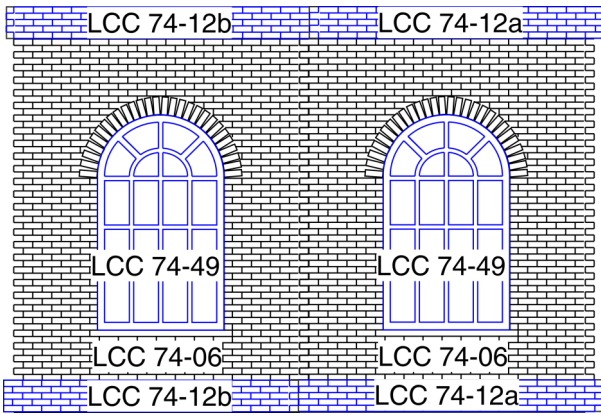
We recommend using acrylic paints. There is no need to undercoat the surface but it can be done if desired. The material used is porous and relatively forgiving, heavy coats are unlikely to flood the brickwork.

WINDOWS AND DOORS ASSEMBLY

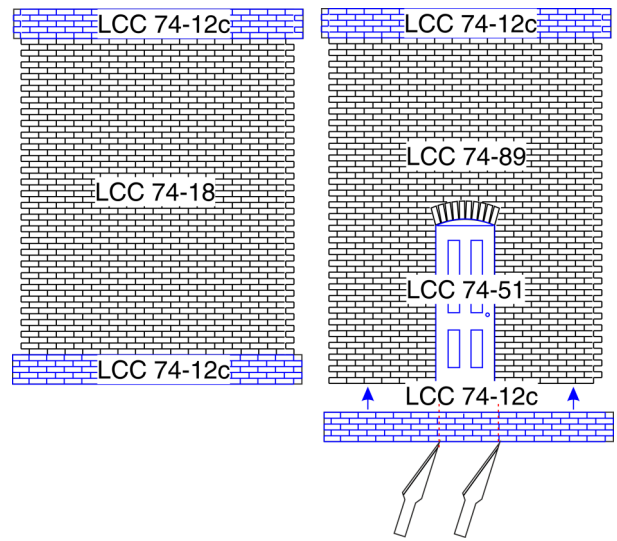


ELEVATIONS LAYOUT

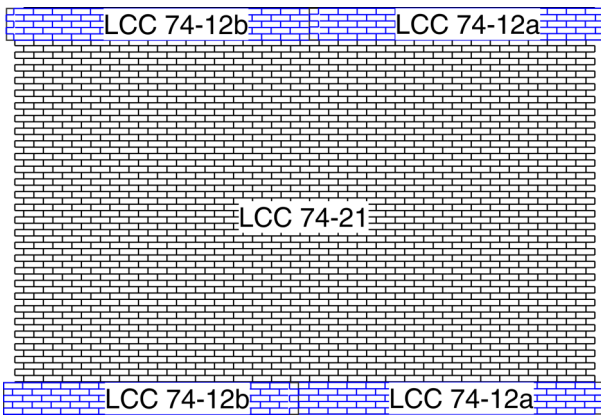
FRONT



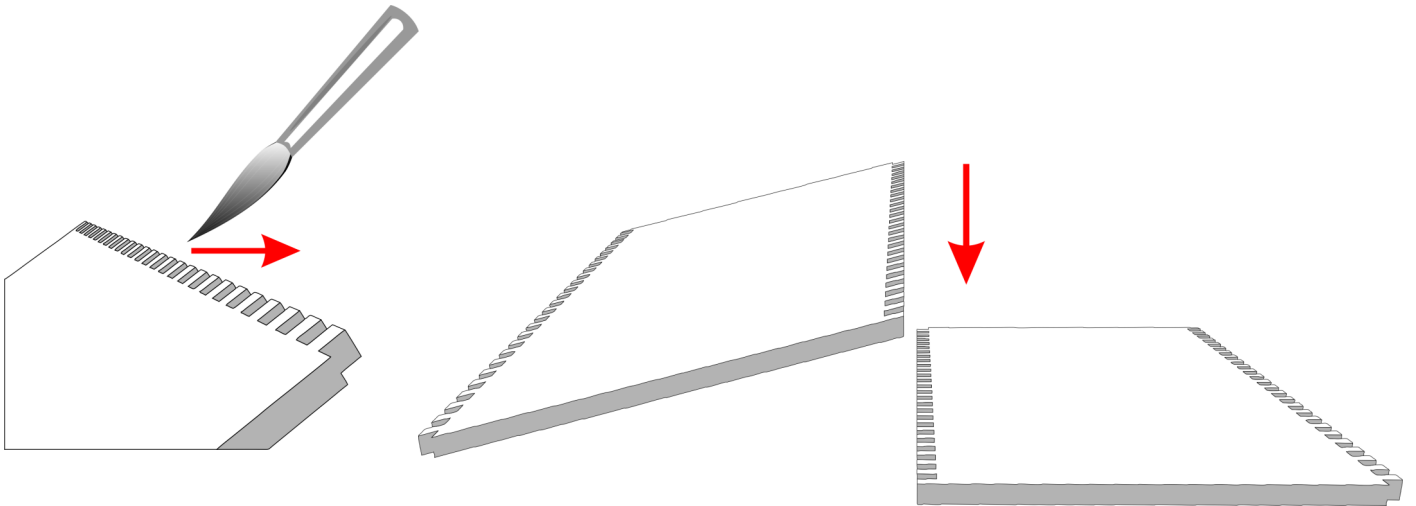
SIDES



BACK



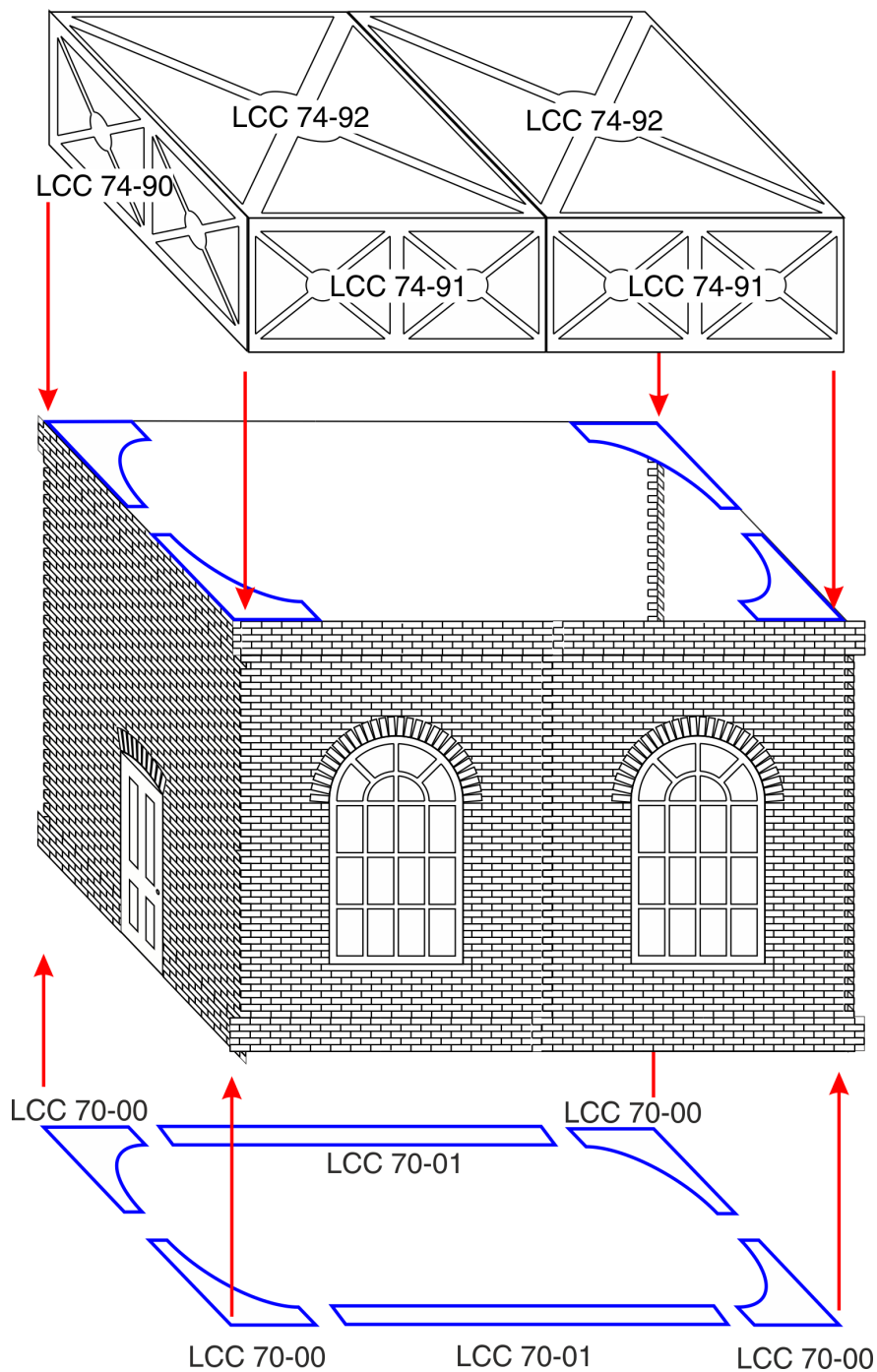
CONNECTING WALL ELEMENTS



Recommended way of gluing parts together is to apply PVA glue to the interlocking bricks working from back of the part to the front. This ensures there will be no glue overflow on the front, visible side.

Then lay the part without glue on flat surface laying on its front (engraved side). Press the part with glue onto the part without glue. Gently push parts together from sides to close the gap.

MAIN ASSEMBLY AND WATER TANK



After the main building is complete (walls and decoration strips) we recommend to strengthen the construction with LCC 70-00 corner supports. Use one kits for the bottom of the water tower and then the second in the tank section. In addition glue provided LCC 70-01 in strategic places. It is possible to omit the support structure if the water tower is going to be glued to solid surface soon after being assembled.